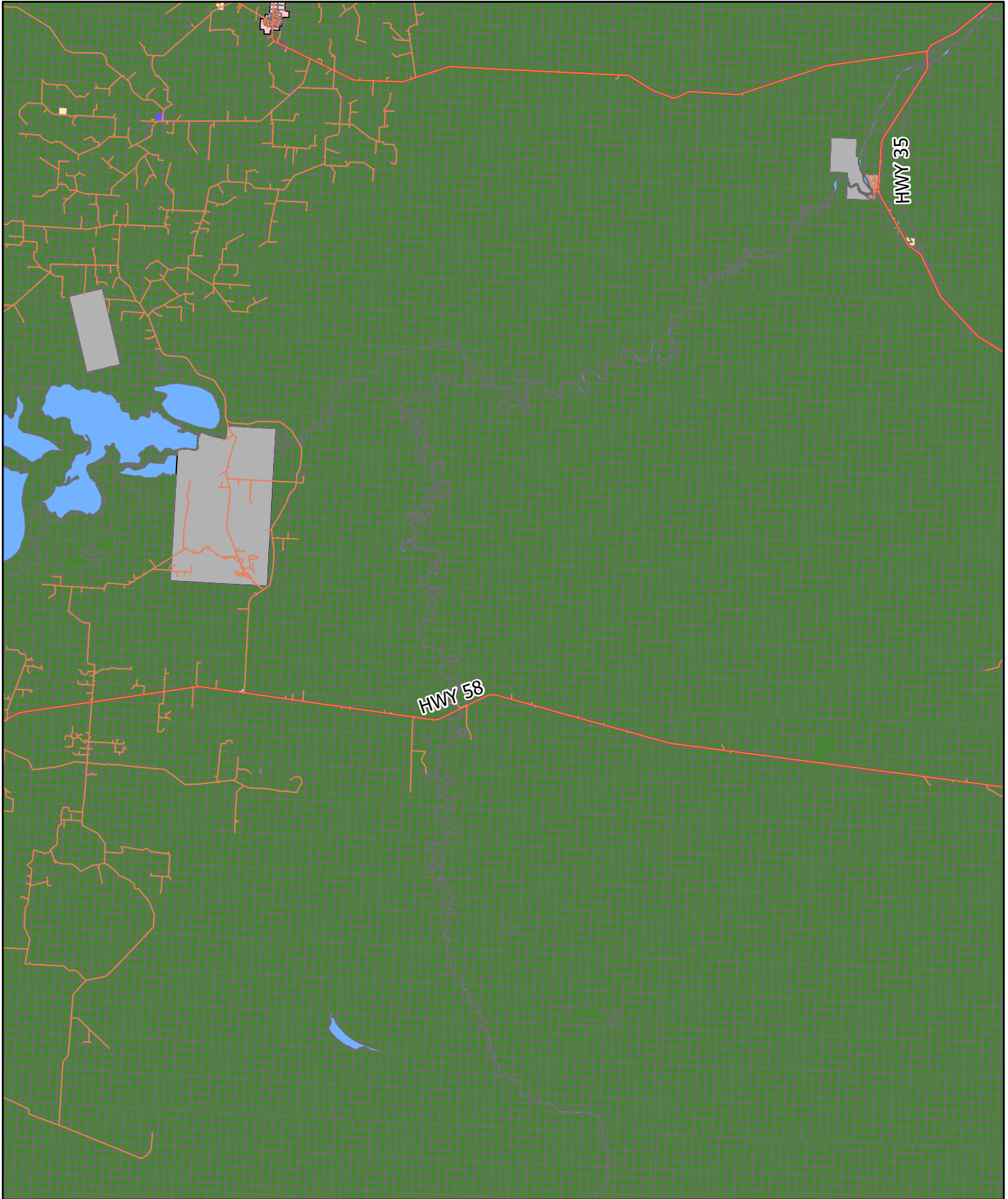


Rural Land Use Districts

- | | | | |
|------------------------|-----------------------------|--------------------------|------------------------|
| Agricultural 1 | Country Residential | Recreation 1 | Parcel Boundary |
| Airport | Direct Control 1 | Recreation 2 | Provincial Highways |
| Country Recreational | Direct Control 2 | Remote Recreation | Roads |
| Country Recreational 2 | Forestry | Rural Industrial General | Town |
| | Hamlet - Highway Commercial | Rural Industrial Light | Waterbodies |
| | Institutional | Urban Fringe | First Nations Reserves |



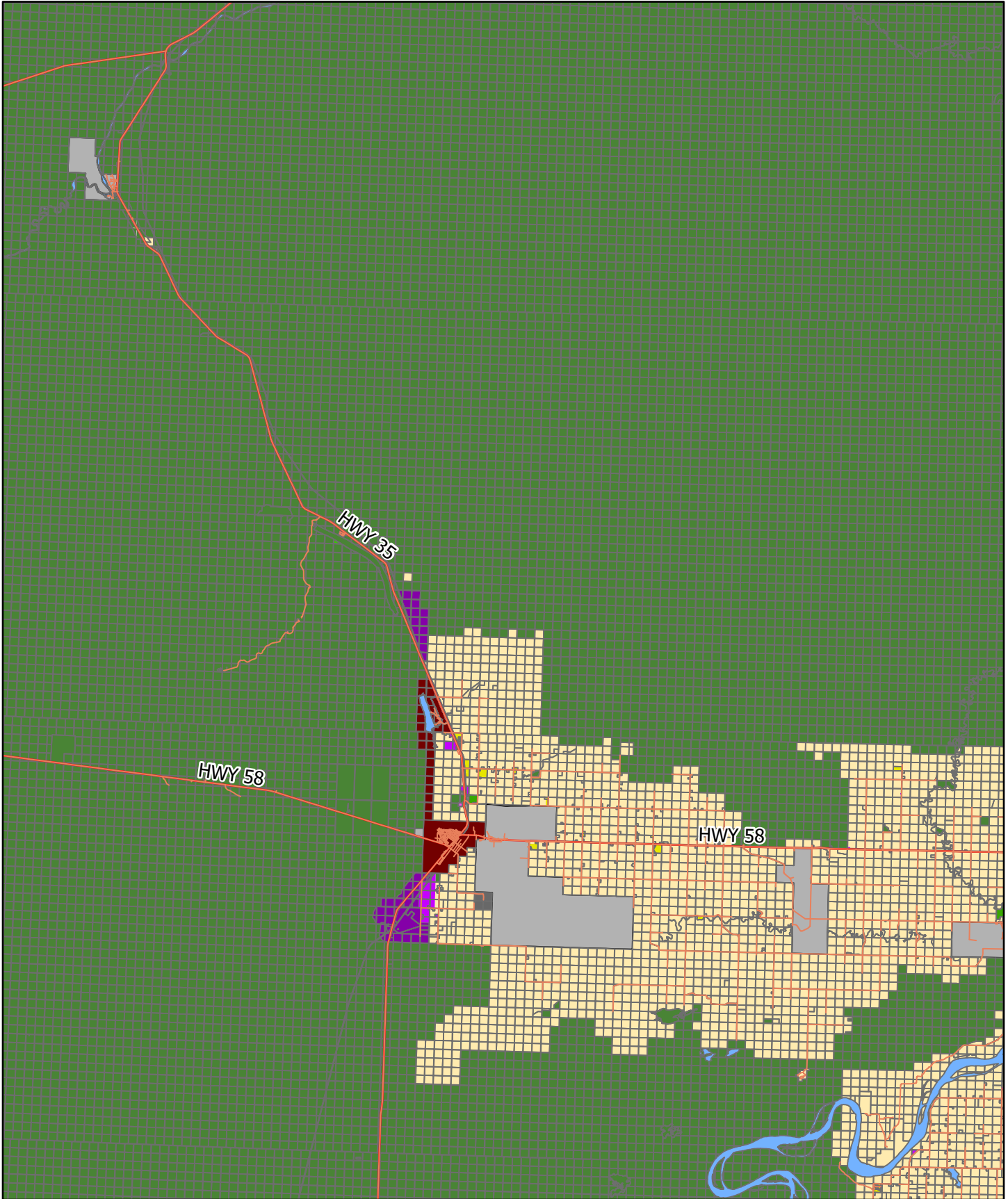


Rural Land Use Districts

- Country Residential
- Direct Control 1
- Direct Control 2
- Agricultural 1
- Airport
- Country Recreational
- Forestry
- Hamlet - Highway Commercial
- Country Recreational 2
- Institutional
- Recreation 1
- Recreation 2
- Remote Recreation
- Rural Industrial General
- Rural Industrial Light
- Urban Fringe

- Parcel Boundary
- Provincial Highways
- Roads
- Waterbodies
- Hamlet Boundaries
- First Nations Reserves

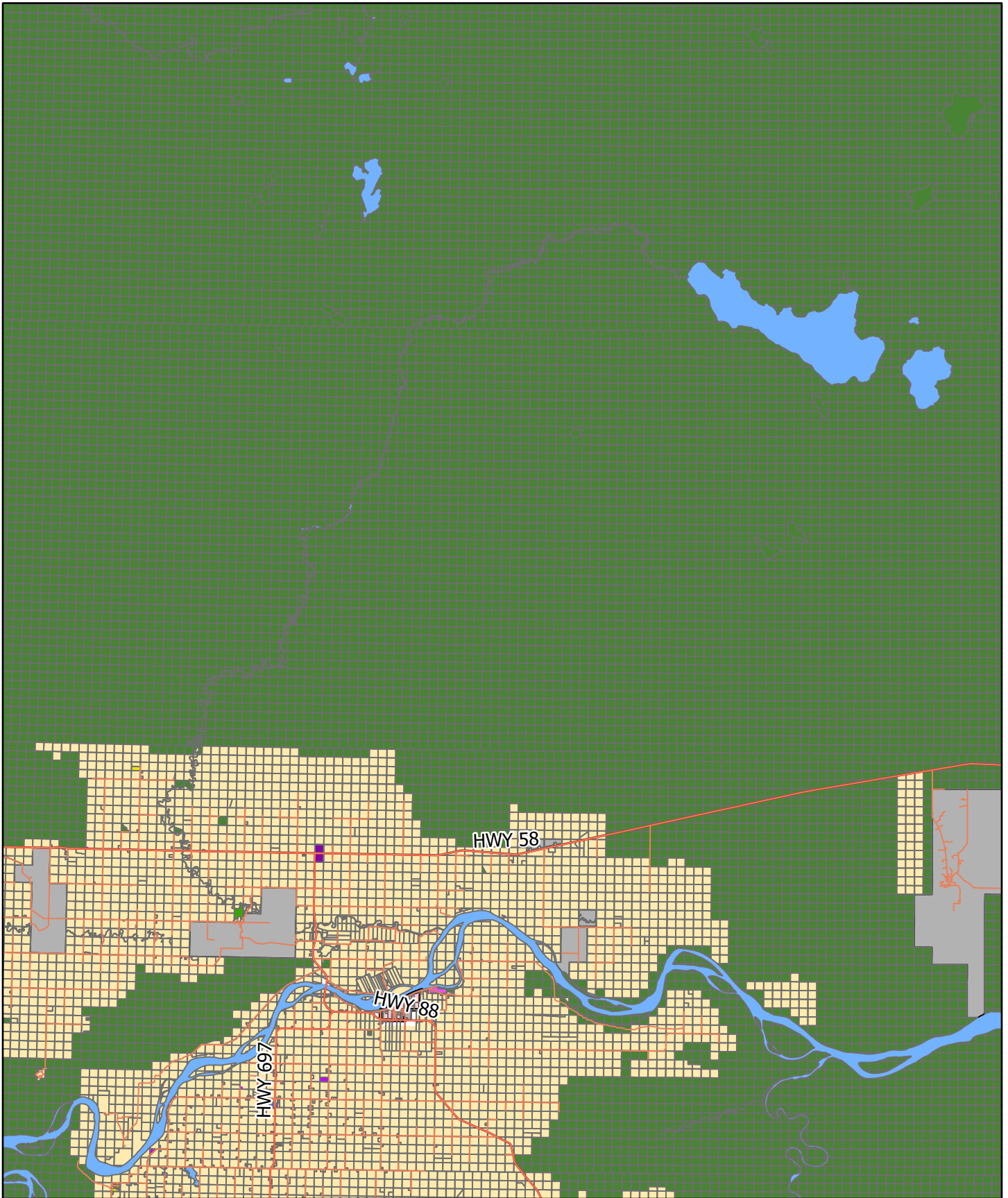




Rural Land Use Districts

- Agricultural 1
- Airport
- Country Recreational
- Country Recreational 2
- Country Residential
- Direct Control 1
- Direct Control 2
- Forestry
- Hamlet - Highway Commercial
- Institutional
- Recreation 1
- Recreation 2
- Remote Recreation
- Rural Industrial General
- Rural Industrial Light
- Urban Fringe
- Parcel Boundary
- Provincial Highways
- Roads
- Town
- Waterbodies
- First Nations Reserves



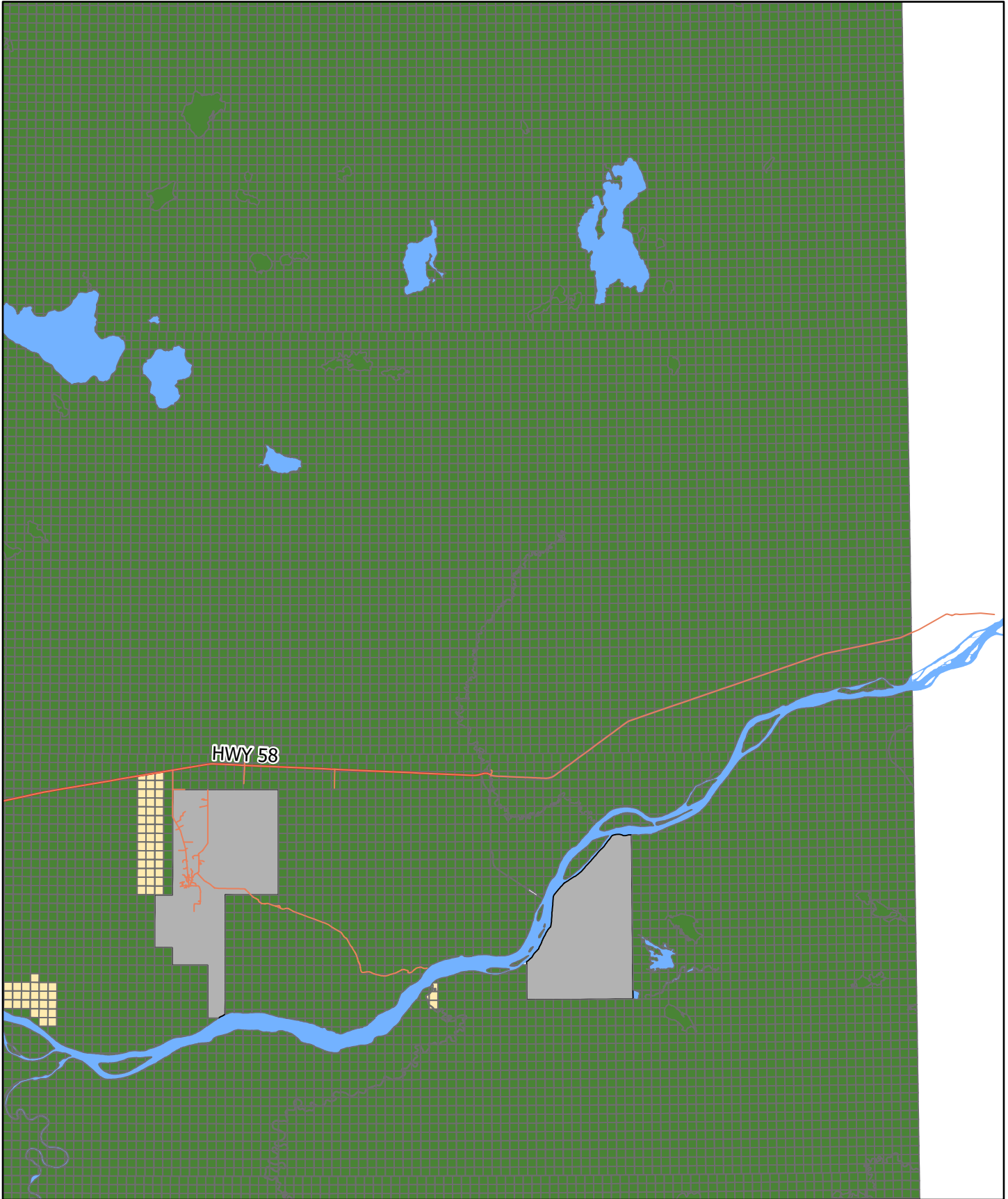


Rural Land Use Districts

- | | | |
|------------------------|-----------------------------|--------------------------|
| Agricultural 1 | Country Residential | Recreation 1 |
| Airport | Direct Control 1 | Recreation 2 |
| Country Recreational | Direct Control 2 | Remote Recreation |
| Country Recreational 2 | Forestry | Rural Industrial General |
| | Hamlet - Highway Commercial | Rural Industrial Light |
| | Institutional | Urban Fringe |

- | |
|------------------------|
| Parcel Boundary |
| Provincial Highways |
| Roads |
| Waterbodies |
| Hamlet Boundaries |
| First Nations Reserves |





Rural Land Use Districts

- Agricultural 1
- Airport
- Country Recreational
- Country Recreational 2
- Country Residential
- Direct Control 1
- Direct Control 2
- Forestry
- Hamlet - Highway Commercial
- Institutional
- Recreation 1
- Recreation 2
- Remote Recreation
- Rural Industrial General
- Rural Industrial Light
- Urban Fringe

- Parcel Boundary
- Provincial Highways
- Roads
- Waterbodies
- First Nations Reserves

